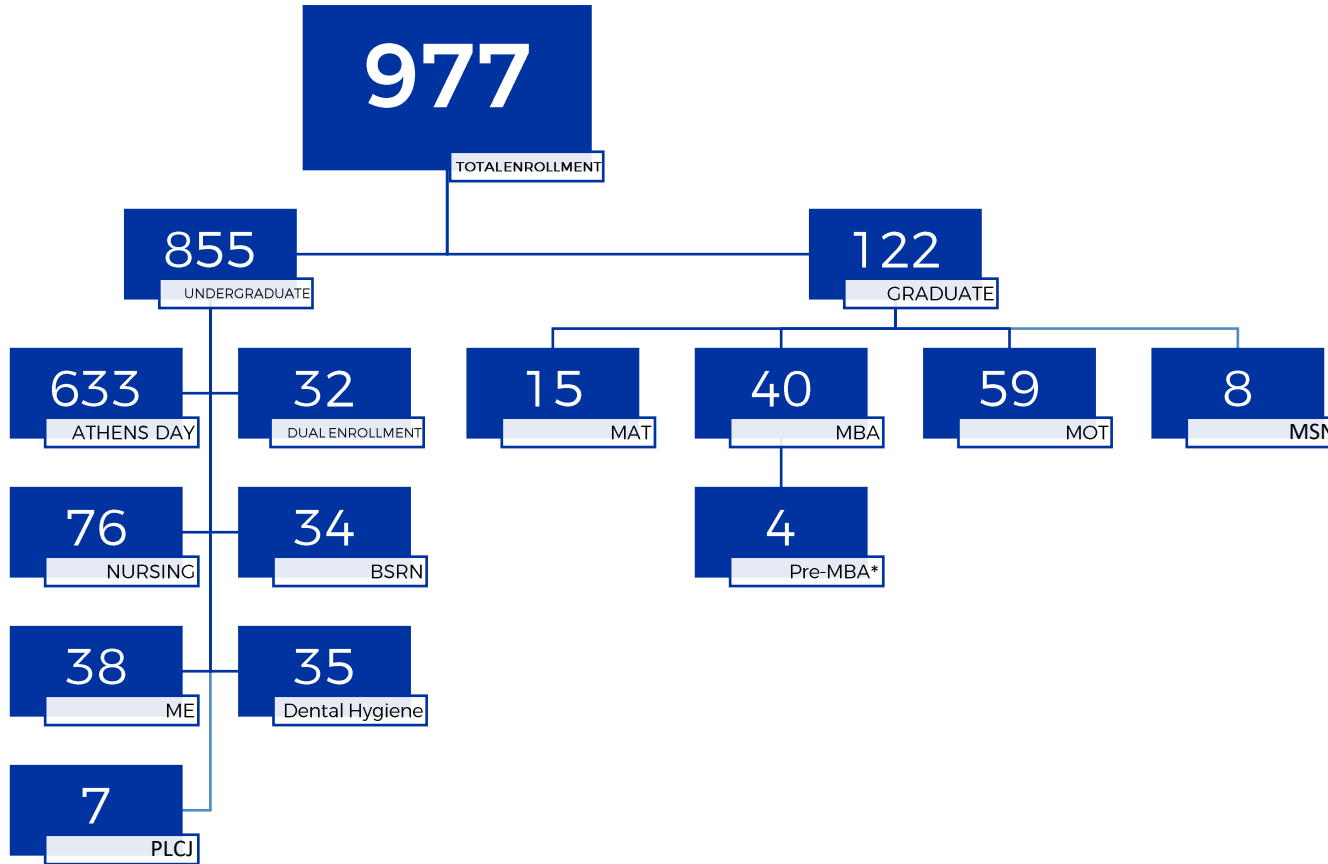




ENROLLMENT BY THE NUMBERS SPRING 2023



*Not included in total count

2022 FRESHMEN COHORT RETENTION RATE

85.2%

Full-Time = 167/196

2022 TRANSFER COHORT RETENTION RATE

93%

All = 88/95

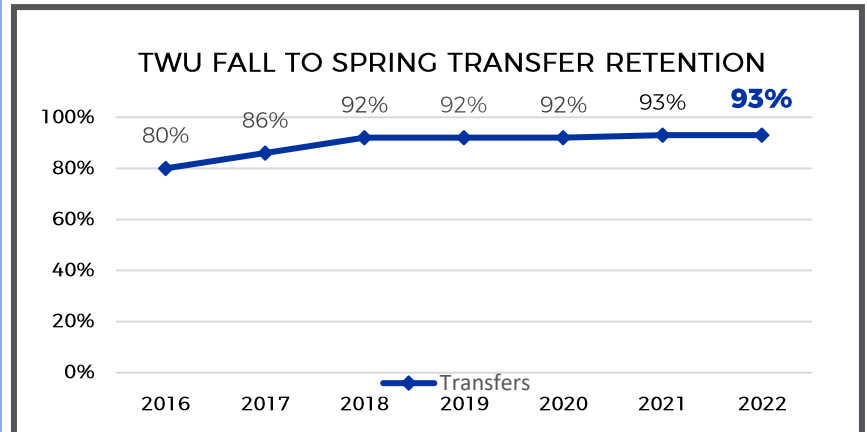
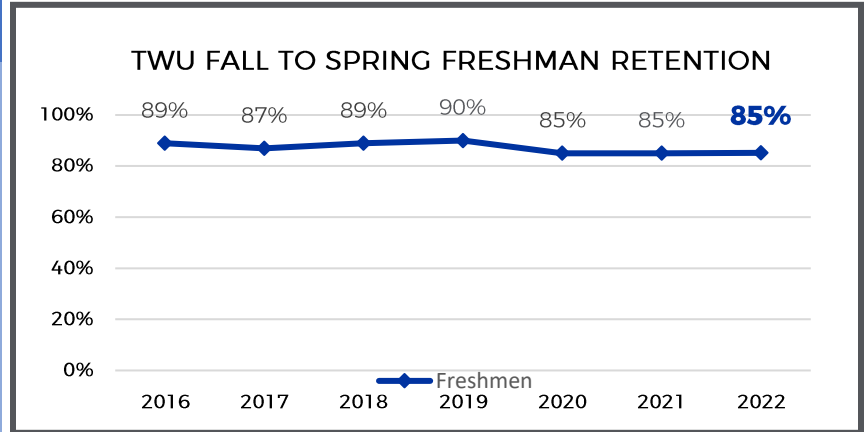
TOP MAJORS FOR NEW SPRING COHORTS

1. Business
2. Allied Health
3. Education
4. Health & Human Performance
5. Social Sciences

2023 NEW STUDENTS



ENROLLMENT TRENDS BY PROGRAM					
	Spring 2022	Spring 2023	% Change	Budgeted	Budget Progress
UNDUPLICATED (ALL STUDENTS)	999	977	-2.2%		
ATHENS DAY	654	603 (FT) 30 (PT), 191 hrs	-3.1%	590	+13
NURSING	91	76	-16.5%	80	-4
BSRN	44	34	-22.7%	42	-8
Dental Hygiene	32	35	+9.4%	37	-2
ME (TOTAL)	48	38 Fall: 471 hrs Spring: 412 hrs	-21%	1080 hrs (year)	81.8% towards goal
PLCJ	7	7	0%	6	+1
UNDUPLICATED GRADUATE (ALL)	106	122	+15%		
MBA	34	40 Fall: 243 hrs Spring: 318 hrs	+17.6%	600 hrs (year)	93.5% towards goal
PRE-MBA	5	4	-20%	0	
MAT	15	15 Fall: 120 hrs Spring: 128 hrs	0%	228 hrs (year)	109% towards goal
MOT	54	59	+9.3%	57	+2
MSN	3	8	+167%	3	+5
DUAL ENROLLMENT	17	32 Spring: 159 hrs	+88.2%	0	



PT UNDERGRADUATE		PT GRADUATE
767		468
HOURS ENROLLED		HOURS ENROLLED

UG CLASS LEVELS

